



COASTAL ELITE CONT.CO.

Engineering, Procurement & Construction



نيوم، NEOM

VENDOR ID: S11225707

أرامكو السعودية
saudi aramco



VENDOR ID: 10111934

Company Profile

Experience the Difference

www.coastalelitecont.com

CONTENTS



- Introduction-Who We Are
- Message From CEO
- Our Services
- CEC 's Vision & Mission
- Company HSE Policy
- Work Experience.....
- List of Completed & Ongoing Projects
- Scope Of Work
- Project Planning & Schedule
- CEC's Material Handling & Filed Fabrication
- CEC's Construction Aim
- Quality Control & Inspection
- Manpower Summary
- Major Construction Equipment
- CEC's Photo Gallery
- Our Clients

WHO WE ARE

Coastal Elite (CEC) is a Contracting Company. **CEC** is specialized in execution of Piping, Electro-Mechanical and Civil projects for the Oil and Gas Industry. **CEC** has a team of more than 500 well experienced Professional Engineers and skilled technical staff of all disciplines such as Mechanical, Electrical, Instrumentation and Civil.

CEC comprises a team of well qualified and fully trained technicians having hands on experience of construction for the Oil & Gas Facilities, MEP services in particular and Power Plant technology. The company has also a team of specialized staff for Piping Fabrication, erection, commissioning works, Electro-Mechanical and Civil works. Additionally, **CEC** has its own assets of all necessary machines and heavy equipment thereby relying minimal on rental resources and equipment.



MESSAGE FROM CEO



I have the privilege and immense pleasure to introduce my company **M/s Coastal Elite Cont. (CEC)**. We developed this company with a vision in our minds to become a globally recognized company by making a name for ourselves in the market for keeping our customer faithful and delighted. I have a strong belief that business always requires the same ingredients for success. A winning combination of talent and personalities, full commitment, and the right management.

Furthermore, we are keeping our customers content and value mutual business relation in order to meet our workforce success and achieve the goal. My management will also keep our employees well equipped to serve our customer's needs. With the current rate of development in Saudi Arabia our focus is on educating, updating and training our employees with modern ways of work.

"We Believe in Service, Quality, Reliability, Efficiency, Safety, Commitments, Continuous Improvements, Team Work & Proper Control".

THANKS & REGARDS

MR.FIDA MOHAMMAD ABBASI

(CEO)

COASTAL ELITE CONT. CO. (CEC)

OUR SERVICES

Design, Engineering, Procurement, Constructions
General Civil Constructions, Infrastructure
General Contracting Civil, Buildings, Architectural
Electrical, MEP, Industrial Security and Mechanical
Works for various sectors. Onshore & Offshore
Constructions.

- Civil Construction, Rcc Buildings Including Structural And Architectural
- Plant Fabrication And Installation
- Electro/mechanical Projects
- Security, It, Communication & Idas System
- Steel Fabrication
- Temporary Facilities
- Drilling And Blasting Services
- Operation And Maintenance
- Camps, Catering And Warehouse Management



أرامكو السعودية
saudi aramco



الشركة السعودية للكهرباء
Saudi Electricity Company

رؤية
2030
المملكة العربية السعودية
KINGDOM OF SAUDI ARABIA

Vision & Mission



OUR VISION

To be the leader in our industry and the major player in each of our market segments.
To be the leading provider of quality construction and engineering services in the Middle East.

OUR MISSION

To meet the requirements and always strives to exceed the expectations of our Clients,
Shareholders and Employees.

To overcome the external and internal issues associated with the organization's Business and
Scope of work, and to fulfill all the relevant requirements.

To form long-term relationships of value with our clients and partners by using quality construction
and engineering solutions and employing the best resources and latest techniques

VALUES

Our values stand on foundation of Safety & Integrity.
People are the heart of our business.
Clients are our Valued Partners.
Performance excellence is our commitment.

COMPANY POLICY

Health & Safety Policy

Coastal Elite Cont. Co. is firmly committed to Health, Safety and Environment welfare of its employees at work, on site and office. We consider the health safety and environment welfare of our employees to be of paramount importance, and that a safe and healthy working environment is a prerequisite to achieving the CEC's stated objectives and goals to promote excellence in the business of Oil & Gas constructions.

Security & Confidentiality Policy

This policy defines requirements for protection of Coastal Elite Contracting (CEC) assets and Client Property from intentional abuse, misuse, or destruction by employees, contractors, or consultants.

Risk Management Policy

This risk management policy forms part of the company's internal control and corporate governance arrangements. This explains the company's definition of risk and describes the purpose of risk management. It explains the company's underlying approach to risk management and documents the roles and responsibilities of key parties. It outlines how the risk management process fits into the overall system of internal control and identifies the main reporting procedures. Finally, it describes the process used to evaluate the effectiveness of the company's internal control procedures.

A construction worker wearing a yellow hard hat and a safety harness is seen from the back, looking out over a city skyline. The worker is standing on a high-rise building under construction. The background shows a city with several skyscrapers and a large, rounded structure in the distance. The sky is blue with some clouds. The image is split diagonally by a blue triangle that contains the text.

**PROJECT
EXPERIENCE**



COASTAL ELITE CONTRACTING CO.- WORK SUMMARY

أرامكو السعودية
saudi aramco



VENDOR ID: 10111934

S.NO.	PROJECT DESCRIPTION	CLIENT NAME	CONTRACT PERIOD	PROJECT LOCATION	SCOPE OF WORK
1	JAZAN REFINERY PROJECT (PACKAGE 4 & 5)	CCC / SAUDI ARAMCO	Completed 2015-2016	JAZAN	Formwork, Reinforcing & Concreting Works Package
2	JAZAN REFINERY PROJECT (PACKAGE 4 & 5)	PETROFAC SAUDI ARABIA CO.LTD. / SAUDI ARAMCO	Completed 2019-2020	JAZAN	Civil Works-Construction of Road, Grading& Levelling for Re-routing the Sea Water Pipeline
3	Dew point control Units (DPCU) at Abqaiq	SENDAN/SAUDI ARAMCO	ONGOING	ABQAIQ	Civil Works
4	Madinah 3 ISTP	Acciona	ONGOING	Madinah	Civil Substation Works
5	Supply, Fabrication of water storage tanks	Arcon	Completed	Dammam	Supply, Fabrication of water storage tanks
6	Culverts and Duct Banks	Arcon, Saudi Kayan	Completed	Jubail	Culverts and Duct Banks
7	UNO Project- Culverts, Riprap	J & P Cont. Co.	Completed	Hafr Al Batan	Culverts, Riprap
8	Al Sheikh Avenue	Al Sheikh Co.	Completed	Al Khobar	Water supply, sewage system and storm water drainage
9	IWTP-8 Marafiq	EPPM, Marafiq	Completed	Jubail	Asphalt work on slope of lagoons
10	Afia Oil Company	Afia Oil Company	Completed	Jeddah	Foundations, Culverts, Duct Banks
11	Sepco IWPP	Sepco IWPP	Completed	PS1 & PS3	Washout Protection & Culverts
12	Faqeeh Farms	Faqeeh Farms	Completed	Najran	Foundations & washout Protection

Steel Fixing Activity final stage



MV Switch Gear And Transformer Foundation



Carpenter Activity Ongoing





ELECTRO MECHANICAL MAINTENANCE SERVICE OF SADARA COOLING TOWERS

- Periodic inspection of cooling tower thermal efficiency
- Periodic inspection of cooling tower internals and spares
- Periodic maintenance services for cooling tower spares and components
- Preventive maintenance for cooling tower spares and components
- Repair and maintenance for fill system
- Repair and maintenance for drift eliminators
- Repair and maintenance for distribution system
- Repair and maintenance for header line
- Repair and maintenance for mechanical system
- Repair and maintenance for lube system
- Repair and maintenance for partition and wind wall
- Repair and maintenance for louver system
- Repair and maintenance for earthing system
- Repair and maintenance for electrical system
- Repair and maintenance for lighting system
- Repair and maintenance for control system
- Vibration analysis for fan motor
- Rotational analysis for fan hub and leaves
- Pitch angle analysis and rectification for mechanical draft fan leaves
- Laser alignment of motor, gear box, fan assembly etc



COOLING TOWER CORRECTIVE MAINTENANCE

Revamping Service for B&W SPIG cooling tower, 30 cells
Replacement of fill system
Replacement of Drift Eliminators
Replacement of nozzles
Revamping of distribution system



CIVIL WORKS RELATED TO THE COOLING WATER

Civil Works for CWS, CWR Pipe lines
Demolition of Asphalt.
Removal of Base Course.
Demolition of Concrete Grade Slabs.
Excavation.
Disposal of Excavated Material.
Dewatering, Shoring.
Backfill and Compaction
Reinstatement of Area to its original condition.



REPLACE, SEAL, RING : V128 TANK PLATE SEALANT

Total No's of Tanks : 12

TF1-T-1001 (50Mtr Dia. In Size)

TF1-T-1002 (50Mtr Dia. In Size)

TF1-T-1101 (31 Mtr Dia. Size)

TF1-T-1301 (25 Mtr Dia. Size)

TF1-T-1302 (25 Mtr Dia. Size)

TF2-T-2201 (57 Mtr Dia. In Size)

TF2-T-2202 (57 Mtr Dia. In Size)

TF3-T-3101 (25 Mtr Dia. In Size)

TF3-T-3102 (25 Mtr Dia. In Size)

TF3-T-3201 (10 Mtr Dia. In Size)

TF3-T-3202 (10 Mtr Dia. In Size)

TF3-T-4501 (24.5 Mtr Dia. In Size)



SIDEM SAUDI ARABIA

Procurement, Fabrication, Grid blasting & painting and Erection of Chemical Storage Shelter, Lime Stone Storage Shelter and Central Chemical Preparation Plant (Pre- Fabricated Structure) for Marafiq.



JIZAN SUBSTATION 452-CIVIL, ARCHITECTURAL, MECHANICAL & PIPING WORKS

Site mobilization of required working crew and equipment as per construction schedule

Site Preparation works, and earth works

Pile cap works as per drawings

Construction of Substructure foundations, auxiliary foundations, generator foundations, roads and pavings

Provision of piping for fire water system, sewage system, potable water system, RTR

Provision of roads, fencing & landscaping



REFURBISHMENT OF 3 CELLS FOR BAR MILL III PACKAGE COOLING TOWER

Scope of work includes refurbishment of 3 cells for Bar Mill III Package Cooling Tower for Hadeed Plant Al Jubail KSA.
Replacement of fill system, Replacement of DE (Drift Eliminator)
Replacement of Air Inlet Louvers, Replacement of FRP Panels
Replacement of Motor Supports, Replacement of Eco Jet Nozzles
Replacement of Axial Fans, Commissioning of Cooling Tower



E-TEC ARABIA (HADEED PROJECT).

Fabrication and Erection of Hadeed Straightening Shop building
Steel fabrication & Erection of Bundle Rack Project @ Hadeed
Construction of HVAC House
Construction of ETS Steel Building
Fabrication & Erection of Warehouse Structural Building
Construction & Erection of Transformer Shelter Steel Building
Fabrication & Erection of Electric Operated Sliding Door



RECERTIFICATION FOR VARIOUS SIZE FLOW LINES

Flowline Products Which We Handle (plug Valves, swivel Joints, chocks, Loops, pup Joints , Hoses & X-overs) Our Technicians Are Fully Qualified And Trained In All Aspects Of Iron Inspection And Repair Including Visual Inspection, NDT And Pressure Testing.

Saudi Aramco Drilling and Work over Safe Work Instruction Manual

Which states following requirements for chocks, Straight Joints and Low Torque Valves:

- Visual inspection
- Wall thickness test
- Union inspection.
- Identification of the component (each component shall have an individual identification number attached).
- Pressure test - 300 psi low and full working pressure high test.
- Documentation of inspection results
- Our qualified and experienced services team is available 24 hours a day to deliver exceptional service.



CONSTRUCTION OF RIG UTILITY PORTABLES FOR SAUDI ARAMCO

This project is for the construction of 45 portable cabins for the Saudi Aramco rigs. There are 26 varieties of portables such as Foreman office, Electrical and mechanical work shops, kitchens, bathrooms, bedrooms etc. Portables were constructed on 40ft x 12ft heavy duty steel skids with full furnish. All portables are designed for a minimum 20 years of lifespan and is capable to withstand harsh environment and heavy loads.



Construction Of SAR-201 Shaded Warehouse In Tanajib

Scope of Work : Civil, Fabrication, supply and installation of Pre Engineering building
Fabrication & erection of Shaded warehouse
Fabrication and Erection of Storage Racks in Shaded warehouse
Installation of Electrical, Plumbing & Drainage facilities.
Main Structure : Pre Engineering Building
Misc. Structure : Hot Rolled steel structure



AIR BLOWING & OIL FLUSHING FILTRATION SERVICES

Air Blowing For Crude Oil Line, Deisel , Water And Oil Lines
Oil Flushing
Filtration



MANIFOLD / SKID ASSEMBLIES

Design and assembling of various type of skids as
per client requirements
Design and Assembling of Various Type of Manifold as
per client requirements
Assembling of hydrostatic test Skid, Manifolds, Tanks
Up to 30,000 PSI (2,000 BAR)



PIPELINE TESTING SERVICES

Pipeline Pigging, Flange Weld Testing
Inline Weld Testing, Valve Hydro testing



Tank Refurbishment Service. Silo Cement Tanks. Frac Tanks / Storage Tanks.

Sand Blasting For Tanks
Damage Repair
Visual Inspection & Required Testing
Hydrotesting
Painting And Finishing
Painting Once Tanks Successfully Pass,
All The Above Test And Stenciling The Inspection
Dates.
Periodically Test Reports,
Can Be Downloaded Through Online Access,
Will Be Provided To All Clients On Arh Official
Website.



CEC MAINTENANCE RE-CERTIFICATION AND FINISHING SERVICES

Plug Testing, Inline Weld Testing Valve Hydro testing, Industrial Bolting Solutions, Oil Flushing, Pipe Cold Bending, Filtration Services.



Air Blowing, hydrotesting, Nitrogen Testing & Flushing Pipelines & Plants Piping, Elbows, manifolds From 20 Psi Till 30,000 Psi With Approved Technican And Equipments.



Hydro testing / spark Testing, Sand Blasting, Internal external Coating For Frac Tanks/water/chemical/acid. Painting And Finishing.



Re certification , Sand Blasting, Internal / External Coatings Maintenance and Finishing For All Kind of Cement Silo Tanks, Storage Tanks.



Onshore & Offshore All Kinds of Piping, Hoses, Upstream , X-overs, Choke Line, Cement Line, Nitrogen Line Hydro testing , Maintenance And Finishing Services.



Construction Services (Civil, Mechanical, E&I)



SCOPE OF WORK

COASTAL ELITE CONTRACTING CO.

CEC is an approved Contractor for ARAMCO and has successfully executed various Projects of Construction, Electro Mechanical, Steel Structures, Piping & Mechanical equipment Erection and Commissioning works for major EPC clients namely Samsung, Technip, Technicas Reunidas (TR) in Saudi Arabia.

Following its stringent Quality and HSE Policies, CEC commits to provide excellent services to all clients to their entire satisfaction within the agreed completion milestone. **CEC** also strongly believes in following and adhering to all local and International Environment Protection regulations and standards while executing and handling any kind of project.

We believe in extending our full support and co-operation to all our valued clients complying contractual requirement to achieve “Win-Win Situation” for every project.

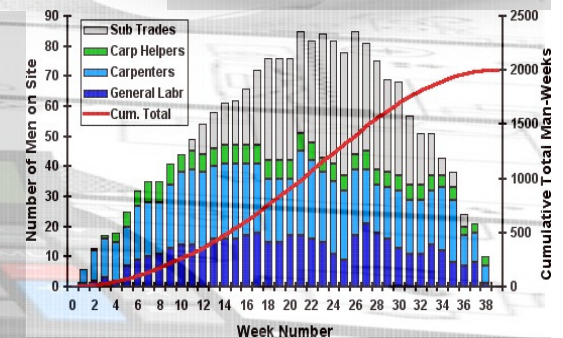
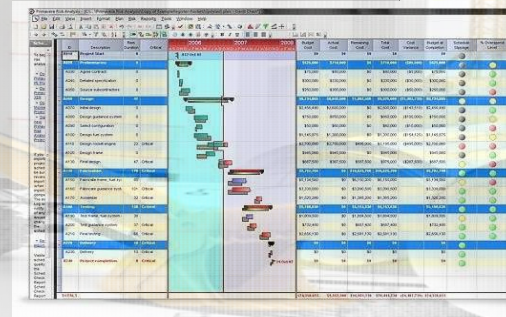
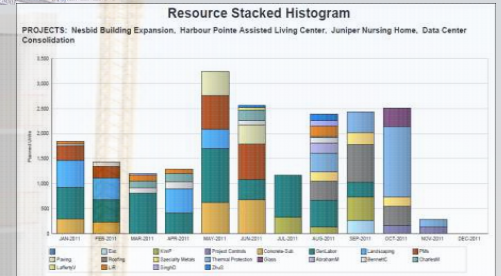


PROJECT PLANING & SCHEDULING

Coastal Elite Cont. Company undertakes the project management process by coordinating closely with its clients throughout the project life cycle, from project conception stage up to handover and final project close-out. We use knowledge gained through effective hands-on experience in identifying potential trouble spots in a project before they develop into problems, recommend solutions, and give clients objective information allowing them to make decisions on key issues before major problems occur.

A fully developed Project Execution Plan clearly shows all relevant activities. This program, developed in Oracle Primavera, is not limited to design, procurement and construction activities. It also incorporates all activities relating to the client, such as pre-design requirements, move management and facilities management requirements to achieve full operational status.

With ECC's proactive approach to project and construction management and years of extensive project management experience, our clients are reassured that their project will be delivered on time, within budget and to specification.



MATERIAL HANDLING & FIELD FABRICATION

CEC integrates all functional areas of the fabrication process and brings each project to successful completion in common with the objectives and needs of the customer. CEC successfully engages in project management, project procurement, material management, fabrication, heat treatment, surface preparation/painting, quality assurance, documentation. The company has both mobile and fixed cranes. We are well staffed and equipped to cover all aspects of carbon steel and alloy steel fabricated piping, including non-destructive examination and PMI, testing, sand blasting, and painting. We fabricate all types of carbon steel, chrome alloys, stainless steel, nickel alloys, alloy 20, aluminium and duplex piping.

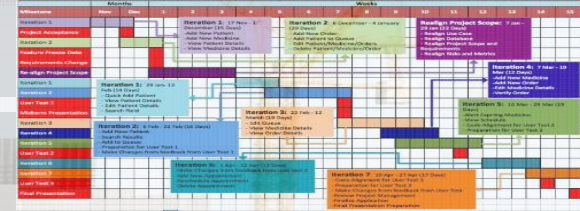
Coastal Elite Cont.Co. also fabricates pipe support structures, steel platforms for vessels including handrails, gratings, stairs and cross over bridges.



CONSTRUCTION

The aim of the construction division in **Coastal Elite Contracting Company** is to achieve success in safety, quality, schedule and performance.

It is the policy of **Coastal Elite Contracting Company** to perform all required Construction Services in every project in full compliance with contractual commitments, applicable regulatory standards and recognized and sound engineering practices in a way that protects and preserves public health, safety, environment and welfare. Company in coordination with our construction affiliates, will implement an adequate mobilization plan to ensure the successful start-up of the construction activities and will establish all necessary procedures after contract award. **CEC** will allocate dedicated work crews for each discipline in the Construction team. By using the latest IT programs, Construction scheduling will determine the optimum size and composition of the crews. Our supervisors, with extensive and proven experience, are fully committed to assure the efficient utilization of the work force, tools and equipment.



QUALITY CONTROL & INSPECTION

Quality is a part of our corporate culture. It begins with a strong belief by top management delivering quality on a consistent basis inherent to our business success and customer satisfaction. This attitude flows throughout every functional area of our organization. Quality is found not only in the product we produce, but in quality of management, personnel, and systems involved in producing the product. This is popularly referred to as “Total Quality Management” with the added responsibility of continuously improving our processes. QA/QC & Inspection functions as an independent inspection department for in-house jobs. QA/QC & Inspection Department develops inspection and test plans and control procedures for all activities in line with the applicable Codes and standards and client’s specification. QA/QC & Inspection monitors, as well as carries out all required stage-wise inspection and testing right from procurement stages to final release to ensure the quality of the products/ services provided by us fully comply with the customers’ requirements and statutory regulations.

Some of the major services provided are the following:
Radiographic Examination & Ultrasonic Examination
Liquid Dye-Penetrant Examination
Alloy Verification & Hardness Test of Metal
Painting & Coating – Thickness Test, Holiday Test



MANPOWER SUMMARY

Category	No. of Employees		Category	No. of Employees	
Management		12	Craftsmen & Other		643
GRO / PRO		10	Foreman	32	
Project Manager		12	Pipe Welder	24	
Administrators		10	Plate Welder	14	
QA/QC, Safety		14	Pipe Fitter	26	
Engineers		67	Rigger	16	
Civil Engineers	14		Iron Worker	10	
Architectural Engineers	12		Mechanic	15	
Mechanical Engineers	16		Electrician	24	
Electrical Engineers	13		Instrument Worker	19	
Instrumentation Engineers	12		Plumber	34	
Field Supervisors		169	RTR Pipe installer	16	
Civil	19		Painter	19	
Building	16		Rebar Worker	28	
Steel Structure	12		Bricklayer, Masons	24	
Piping	21		Masonry	28	
Tank	12		Concrete Worker	31	
Erection & Installation	19		Scaffolder	19	
Painting & Insulation	16		Heavy Equipment Operators	66	
Electrical	19		Light & Heavy Drivers	42	
Instrumentation	15		Skilled Labors	67	
Work Permit Receiver	19		Unskilled Labors	69	
			Helpers	76	

Total 937 Employees

CEC-MAJOR CONSTRUCTION EQUIPMENT

Equipment	Capacity	Quantity	Equipment Details
Mobile Crane	50 Tonsto 300 Tons	12	Tadano, Grohe,Kobelco
Heavy Equipment Lifter	Up to650 Tons	3	Grove
Tractor/Trailer	20 tons to 50 Tons	7	Benz
Jack Hammer		4	Benz, Volvo,Mitsubishi, Isuzu
Motor Grader	14G	4	Volvo, CAT
Excavator	PC320 & PC 220	6	Kobelco
Rock Breaker	K 200	3	Kobelco
Backhoe -JCB	CAT 428 C & CAT PC 220	7	Caterpillar
WheelLoader	CAT966D, 966F	5	Hitachi, CAT, Komatsu, JCB
Bobcat /Skid Loader		7	
RollerCompactor	5 Ton– 15 Ton	6	JCB
DumpTruck Trailer	25M ₃ & 32M ₃	7	Benz
WaterTanker	12,000 –32,000 ltr	5	
FORKLIFT	3 Ton–10Ton	6	CAT, YALE,Mitsubhishi
SIDE BOOM		5	
Diesel Tanker	5,000 –10,000 ltr	3	

PHOTO GALLERY



Transformer Foundation Based



Transformer Foundation (SWCC-Alkhubar)



Transformer Foundation Pouring Activity



Transformer Foundation



MV Switchgears Ready For Pouring (SWCC-Alkhubar)



Steel Fixing Activity Ongoing



Foundation Finishing Stage



MV Switch Gear And Transformer Foundation



Steel Fixing Activity for New Fire Wall



Carpenter Activity Ongoing



Steel Fixing Activity Final Stage



Steel Fixing Activity Ongoing



Steel Fixing Activity Ongoing



Painting Work Ongoing



Finishing Work Ongoing



Structure Steel Fabrication Activity Ongoing



Concrete Filling Activity Ongoing



Pipe Welding Activity at Site

OUR CLIENTS

أرامكو السعودية
saudi oramco



شركة المياه الوطنية
National Water Company



الشركة السعودية للكهرباء
Saudi Electricity Company



سابك
SABIC

بترو رابغ
Petro Rabigh



صدارة
Sadara



سبكيم
Sipchem
excellence everywhere



SAMSUNG
SAMSUNG ENGINEERING



Schlumberger

KJO
عمليات الحفج المشتركة
AL KHAJJI JOINT OPERATIONS



FLUOR®

SAIPEM



DOOSAN

SNC-LAVALIN



NOPEC



سامرف للمواد
Samref



DAELIM

TECNICAS REUNIDAS



Chevron



Linde



EPPM
KSA

سكيم



wipro



VEOLIA



Baker Hughes



ABB



HYUNDAI
ENGINEERING & CONSTRUCTION



Petrofac



MODERMOTT
M



Maire Tecnimont



STFA



اسمنت الشرقية
Eastern Cement



Dodsal



CTCI



Bonatti



الجمهورية العربية السورية
REPUBLIC OF SYRIA



Agip



SIEMENS



ALCOA



وزارة الدفاع
MINISTRY OF DEFENSE



HQCEC



DJN Jan De Nul
GROUP



intecsa
Industrial



السعودية
SAUDIA



HITACHI



DOW



KBR



Worley
energy | chemicals | resources





COASTAL ELITE CONTRACTING CO.

THANK YOU

CONTACT US :

**Prince Musaid Street, Al- Khobar Shamaila
Kingdom of Saudi Arabia**

Email: info@coastalelitecont.com